

# Spill Response

## Non-Emergency Calls:

Solano County Department of  
Resource Management  
(707) 784-6765

Fairfield Police Department  
(707) 428-7300

Suisun City Police Department  
(707) 421-7373

Solano Stormwater Alliance  
(707) 429-8930

## Emergency Calls Only:

Dial 911

## Other Useful Numbers

San Francisco Bay Regional Water  
Quality Control Board  
(510) 622-2300

Fairfield Public Works Department  
(707) 428-7485

Suisun City Public Works Department  
(707) 421-7340

CA Department of Fish  
& Game  
(707) 944-5512

This brochure is one of a series of pamphlets describing storm drain protection measures for specific types of construction industry activities. Other pamphlets include:

- General Construction and Site Supervision
- Landscaping, Gardening, and Pool Maintenance
- Painting and Application of Solvents and Adhesives
- Fresh Concrete and Mortar Application
  - Roadwork and Paving
  - Earth-Moving Activities
- Heavy Equipment Operation



***For more information about the storm drain protection program and additional brochures, call:***

Solano Stormwater Alliance  
1010 Chadbourne Road  
Fairfield, CA 94534-9700  
(707) 429-8930



Solano  
Stormwater  
Alliance



Solano  
Stormwater  
Alliance



## EARTH-MOVING ACTIVITIES

## Solano Stormwater Alliance members manage storm drains that flow to the San Francisco Bay, and to the Pacific Ocean without treatment.

Stormwater pollution is a serious problem for wildlife and people who live near streams or wetlands.

- Automotive fluids from vehicles and heavy equipment
- Landscaping runoff containing pesticides or weed killers
- Materials such as used motor oil and antifreeze
- Paint products that people pour or spill into a street or storm drain.

## Storm Drain Pollution from Construction Activities

Construction sites are common sources of storm drain pollution. Materials and wastes that blow or wash into a storm drain, gutter, or street have a direct impact on the Suisun Marsh, San Francisco Bay and the Pacific Ocean.

### Who should use this brochure?

Masons and bricklayers  
Sidewalk construction crews  
Patio construction inspectors  
General contractors  
Home builders  
Developers



## Storm Drain Pollution from Earth-Moving Activities

Soil excavation and grading operations loosen large amounts of soil that can flow or blow into storm drains if handled improperly.

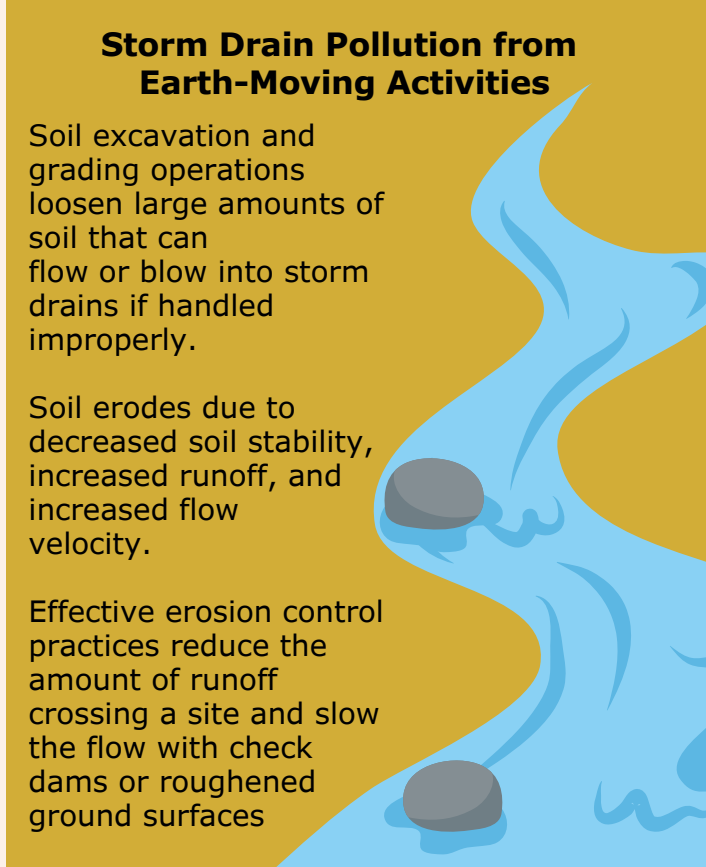
Soil erodes due to decreased soil stability, increased runoff, and increased flow velocity.

Effective erosion control practices reduce the amount of runoff crossing a site and slow the flow with check dams or roughened ground surfaces

### What can you do?

*During construction...*

- **Remove existing vegetation only when absolutely necessary.**
- **Plant temporary vegetation for erosion control** on slopes or where construction is not immediately planned.
- **Protect down slope drainage courses, streams, and storm drains** with wattles, temporary drainage swales, silt fences, and berms.
- **Use check dams or ditches to divert runoff** around excavations and graded areas.
- **Cover stockpiles and excavated soil with secured tarps or plastic sheeting**



## General Business Practices

- **Schedule excavation and grading work for dry weather.**
- **Perform major equipment repairs away from the job site.**
- **When refueling or vehicle and equipment maintenance must be done on site, work within a completely bermed area away from storm drains.**
- **Do not use diesel oil to lubricate or clean equipment or parts.**

Watch for soil and ponded groundwater that may be contaminated. If any of the following conditions are observed, test for contamination and contact the Regional Water Quality Control Board:

- Unusual soil conditions, discoloration, or odor.
- Abandoned underground tanks
- Abandoned wells
- Buried barrels, debris, or trash

## Dewatering Operations

You may be able to recycle/reuse pumped groundwater from dewatering operations for landscape irrigation, or discharge it to storm drains. Contact the Fairfield-Suisun Sewer District or Vallejo Flood and Wastewater District for permission to treat contaminated groundwater and discharge it to the sanitary sewer.

