

#8 - THE GROVE & HEDGEROW PERIMETER

Project Summary

This project proposes to renovate an existing area of land on the FSSD campus to honor retired employees and as a place for the community and employees to walk and bring dogs. Plantings will include commemorative trees, and thematic gardens to introduce habitat and as an opportunity to educate the community about recycled water uses. Trails will include open spaces for pets, interpretive signage, and benches for seating, with access points from Chadbourne Road and the FSSD facility. The entire garden will be fenced and locked when not in use. In addition, a demonstration hedgerow planting will be included as both a demonstration and to enhance the plant perimeter.



Project Goals

- Improve community and employee access to outdoor use areas;
- Create a space accessible to the public, to honor FSSD retirees and community members;
- Install a hedgerow on the plant perimeter to enhance natural areas for wildlife and demonstrate a practice suitable for rural residential properties;
- A space to support an inclusive FSSD dog policy; and
- Walking trails with easy access to and from the FSSD operations facility buildings.
- Incorporate a land acknowledgement for native american communities. The Patwin Tribe is the native group to the land where FSSD is located.

Why? What Vulnerability Addressed?

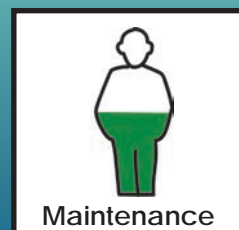
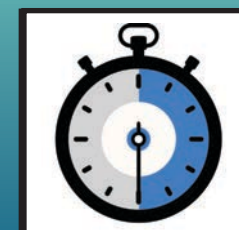
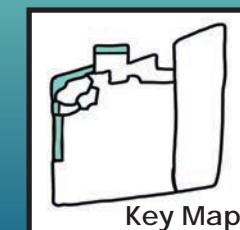
- A lack of publicly available open space
- Promoting use of recycled water in our service area diversifies the water supply portfolio, while reducing overall demand on the Lake Berryessa potable water supply system.

Project Benefits

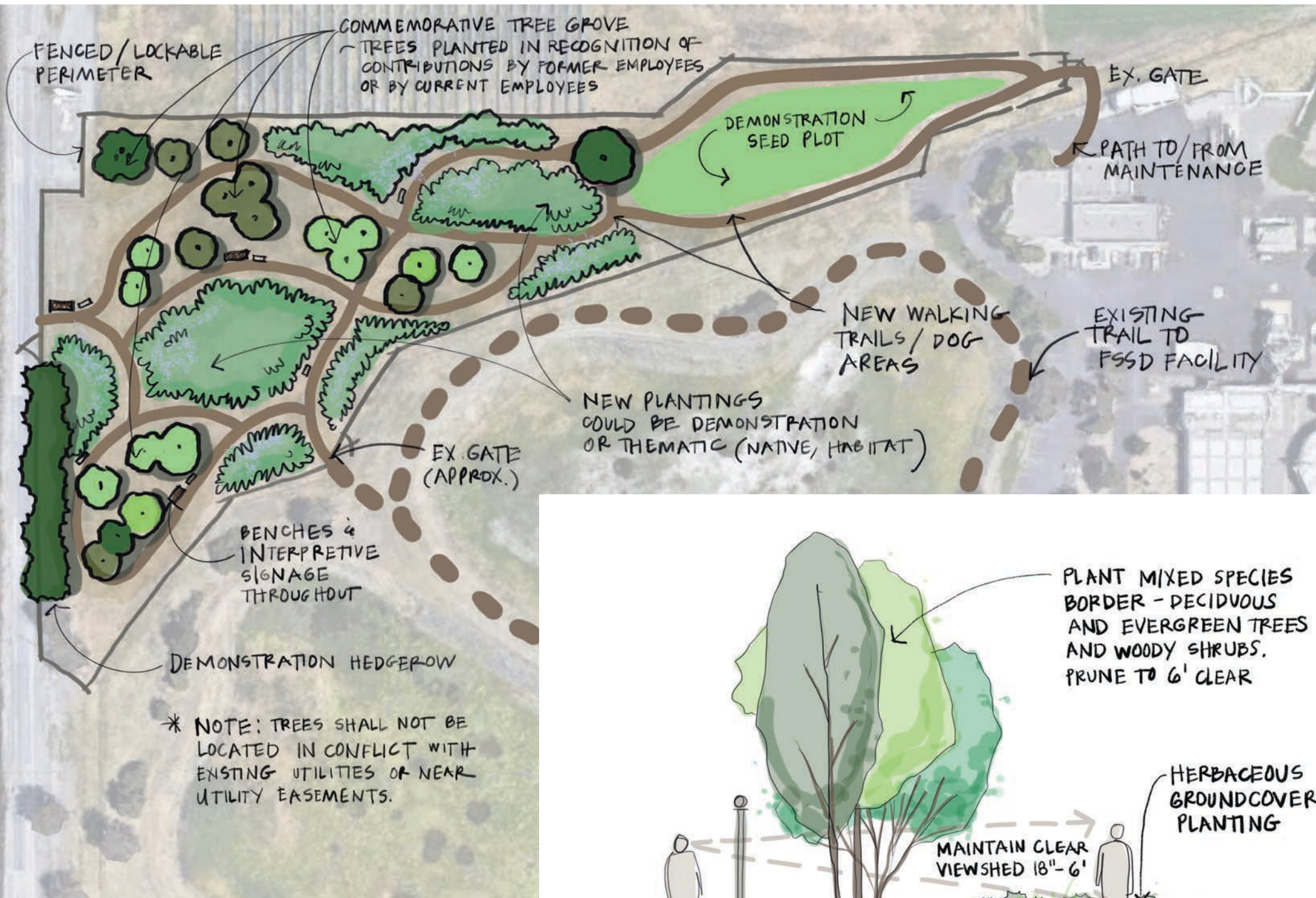
- Demonstrate hedgerow implementation as a practice appropriate to rural residential, peri-urban areas, working lands, and public lands.
- Community access and awareness raising about FSSD and our function and service to the community.
- Increase employee wellness.
- Hedgerows are a great way to provide habitat and a windbreak along an existing fence line.
- Native trees and shrubs will greatly increase habitat value as perching/nesting sites and protective cover, and as a variety of food resources such as berries, seeds, nectar and pollen for wildlife.



RESILIENT & GREEN MASTER PLAN



#8 - THE GROVE & HEDGEROW PERIMETER



Site Plan - Not to Scale

Hedgerow Section - Not to Scale

Climate - Mitigation & Adaptation - Potential

- **MITIGATION:** Carbon sequestration occurs by incorporating deep rooted perennial plants.
- **ADAPTATION:** Increasing landscape areas reduces temperatures which makes our community more livable; increasing biodiversity and pollinator species makes local farms more resilient.

Regulatory Considerations

- Facility-specific Permits
- Local Ordinances

Next Steps (to Implement) Major Tasks and Time-line

Months:

- Install recycled water irrigation system to 'Grove' area
- Plant hedgerow phase 1 in Grove area
- Co-host a compost giveaway with City of Fairfield

Year 1:

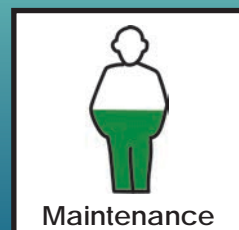
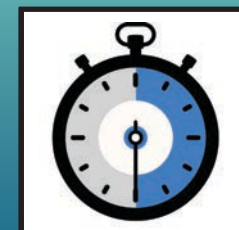
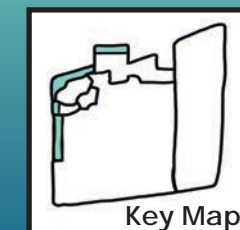
- Confirm project approach and prepare a development plan, including:
 - Landscape Plan and Construction Documents
 - Updated Cost Estimates
 - Secure project funding

Long-term O&M Considerations

- The maintenance burden in the Grove area will be higher than current conditions.
- Ensure that District staff are adequately trained to maintain new landscape areas or are equipped with service contracts to enable success.
- Long term maintenance will be required, including daily opening/closing of the area to the public, intensive removal of invasive plants, long term weed abatement and at least weekly maintenance (mowing and weeding). Monthly maintenance of the hedgerows and at least quarterly trail maintenance.
- Maintaining a clear viewshed through the hedgerow will enhance safety and ease of maintenance.



RESILIENT & GREEN MASTER PLAN



#8 - THE GROVE & HEDGEROW PERIMETER



Planning Level Cost Estimate

1. Landscape Plans: \$350,000
2. Capital Cost = \$2,000,000
3. Operations & Maintenance = ~\$150,000 annually (dedicated staff)

Grant Funding Potential / Ideas

- Department of Water Resources, drought readiness funding to create a recycled water demonstration park

Potential Project Partners

- California Conservation Corps
- Sustainable Solano
- Solano Resource Conservation District
- City of Fairfield and Suisun City
- Suisun City Climate & Environmental Committee
- Solano Master Gardeners
- Suzanne Bontempo, Our Water Our World

Image Key

1. Decomposed granite paths, mulched areas and simple plantings allow for multiple uses and lower maintenance requirements
2. Post 'No-Spraying' signs in multiple languages and promote use of integrated pest management (source: Hedgerow Farms)
3. Visibility and access will change as the Hedgerow matures, 20-years in this photo
4. A hedgerow 2-years after planting
5. Planting will include low level plants (18" and below) and taller trees and upright shrubs to minimize maintenance and allow for a clear line of sight through the area.



RESILIENT & GREEN MASTER PLAN

