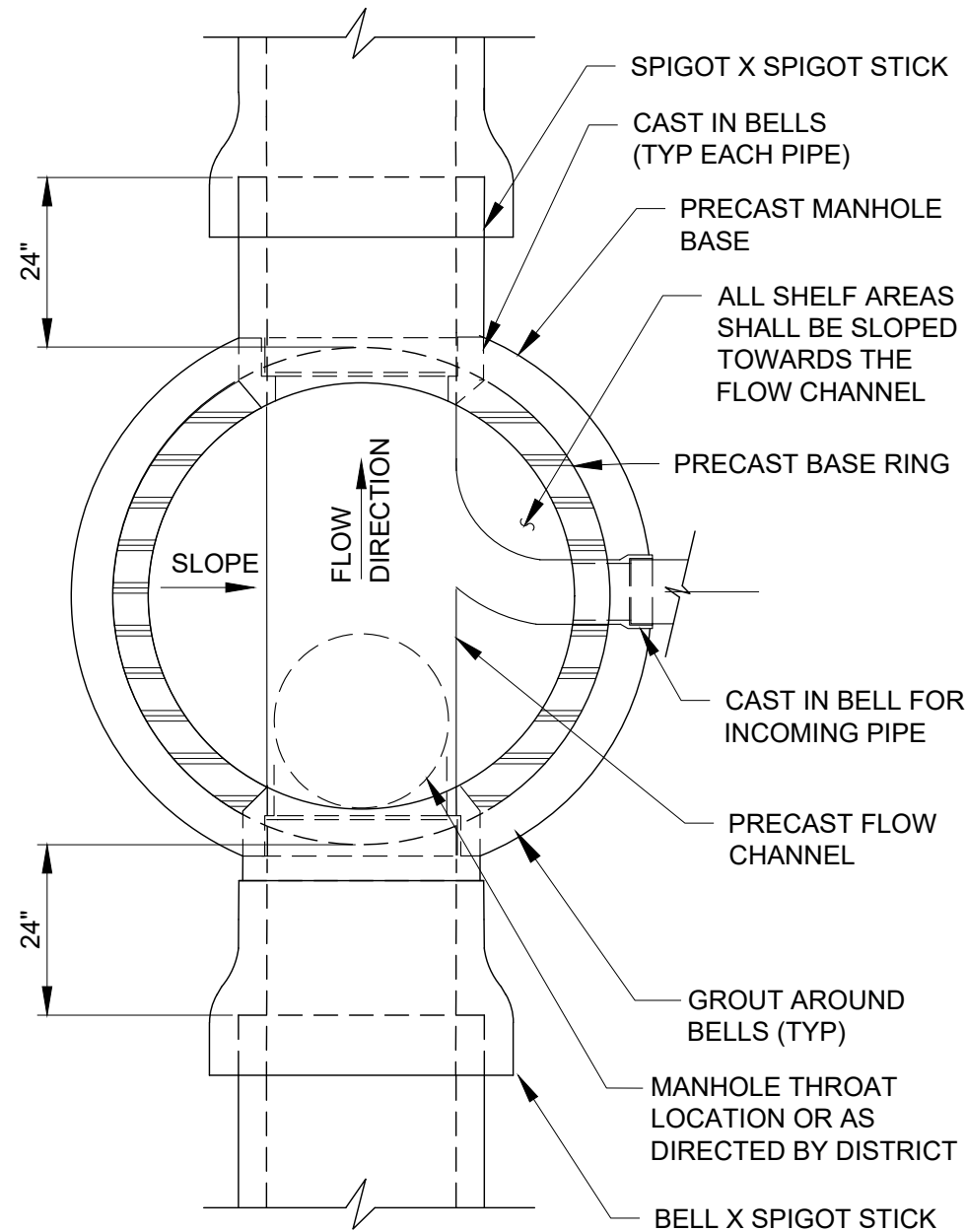


NOTES

1. LAY PIPE THROUGH MANHOLE WHEN POSSIBLE. OTHERWISE, FORM CHANNEL TO MAINTAIN PIPE SECTION. TRUNK SEWER PIPES ENTERING OR LEAVING THE MANHOLE BASE SHALL HAVE A STANDARD JOINT LOCATED WITHIN 24" OF THE BASE. WHERE PIPES CHANGE DIRECTION WITHIN MANHOLE, FORM CHANNEL WITH DRYPACK GROUT TO FORM SMOOTH TRANSITION WITHIN MANHOLE TO CHANNELIZE FLOW.
2. ALL REINFORCEMENT SHALL BE 3" CLEAR OF CONCRETE FACE.
3. SQUARE BLOCK TO BE USED FOR EASEMENTS.
4. ROUND BLOCK MAY BE USED IN STREETS.
5. NOT USED.
6. MANHOLE SHALL BE TREATED WITH SEWPERCOAT OR APPROVED EQUAL WHEN REQUIRED BY THE DISTRICT. PREPARATION AND APPLICATION SHALL BE PER MANUFACTURER'S DIRECTIONS.
7. MINIMUM MANHOLE INSIDE DIAMETERS SHALL BE AS SHOWN IN TABLE BELOW. LARGER MANHOLES MAY BE REQUIRED DEPENDING ON SIZE AND LOCATION OF SIDE SEWERS.

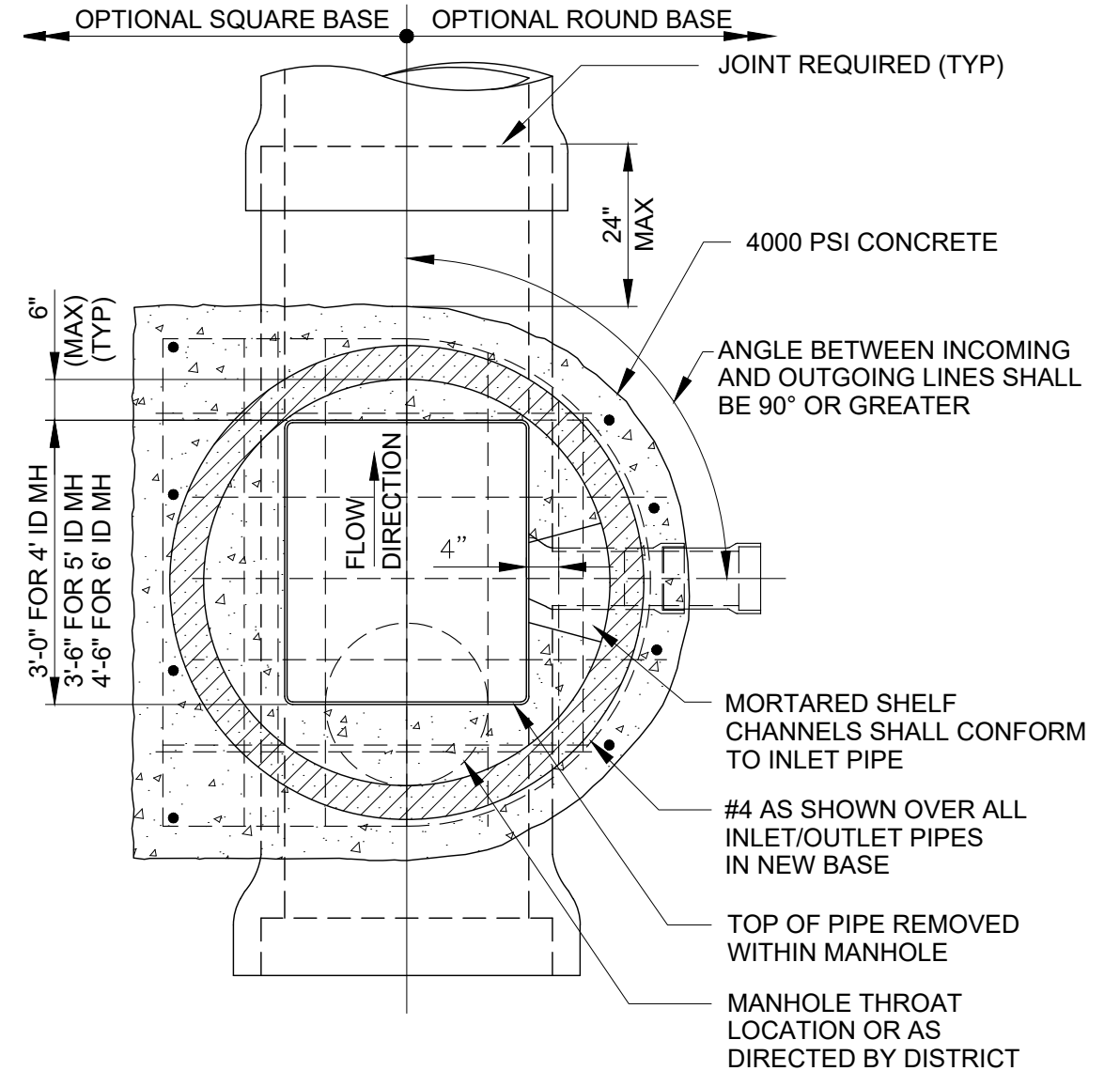
SEWER DIAMETER	MANHOLE INSIDE DIAMETER (MIN)
< 18"	4'-0"
18" THROUGH 45"	5'-0"
≥ 46"	6'-0"

9. ALL MANHOLES AND CASTINGS SHALL BE DESIGNED FOR H-20 LOADING REGARDLESS OF INSTALLATION LOCATION.
10. BACKFILL FOR MANHOLES SHALL BE SPECIFIED BY DESIGN ENGINEER PER THE REQUIREMENTS OF THE GEOTECHNICAL REPORT. BACKFILL SHALL START AT SURFACE UPON WHICH THE MANHOLE BASE RESTS.
11. FOR ALL MANHOLE JOINTS PROVIDE EXTERIOR JOINT WRAP OVER GROUTED JOINTS USING 12" WIDE RUB'R- NEK EXTERNAL CONCRETE JOINT WRAP, OR APPROVED EQUAL.
12. SEE DESIGN STANDARDS FOR ADDITIONAL INFORMATION AT www.FSSD.com/District-Standards/.



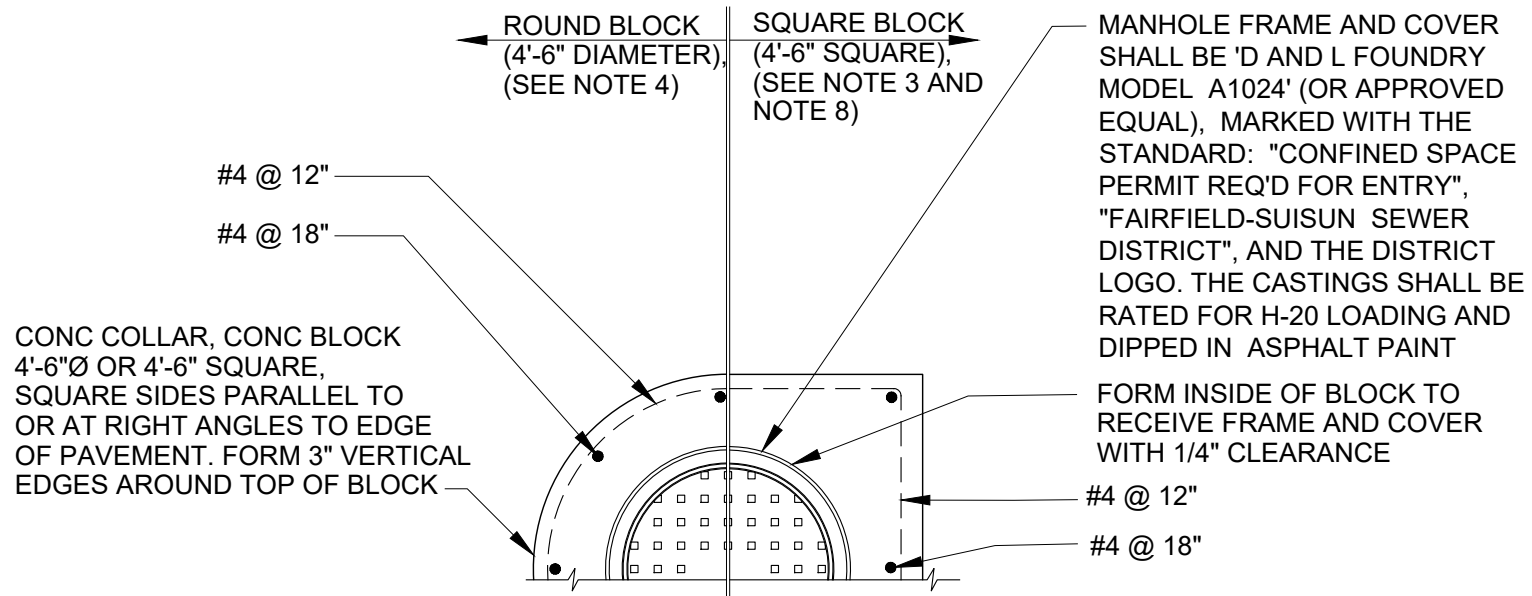
**FOUNDATION PLAN
PRECAST MANHOLE**

NOT TO SCALE



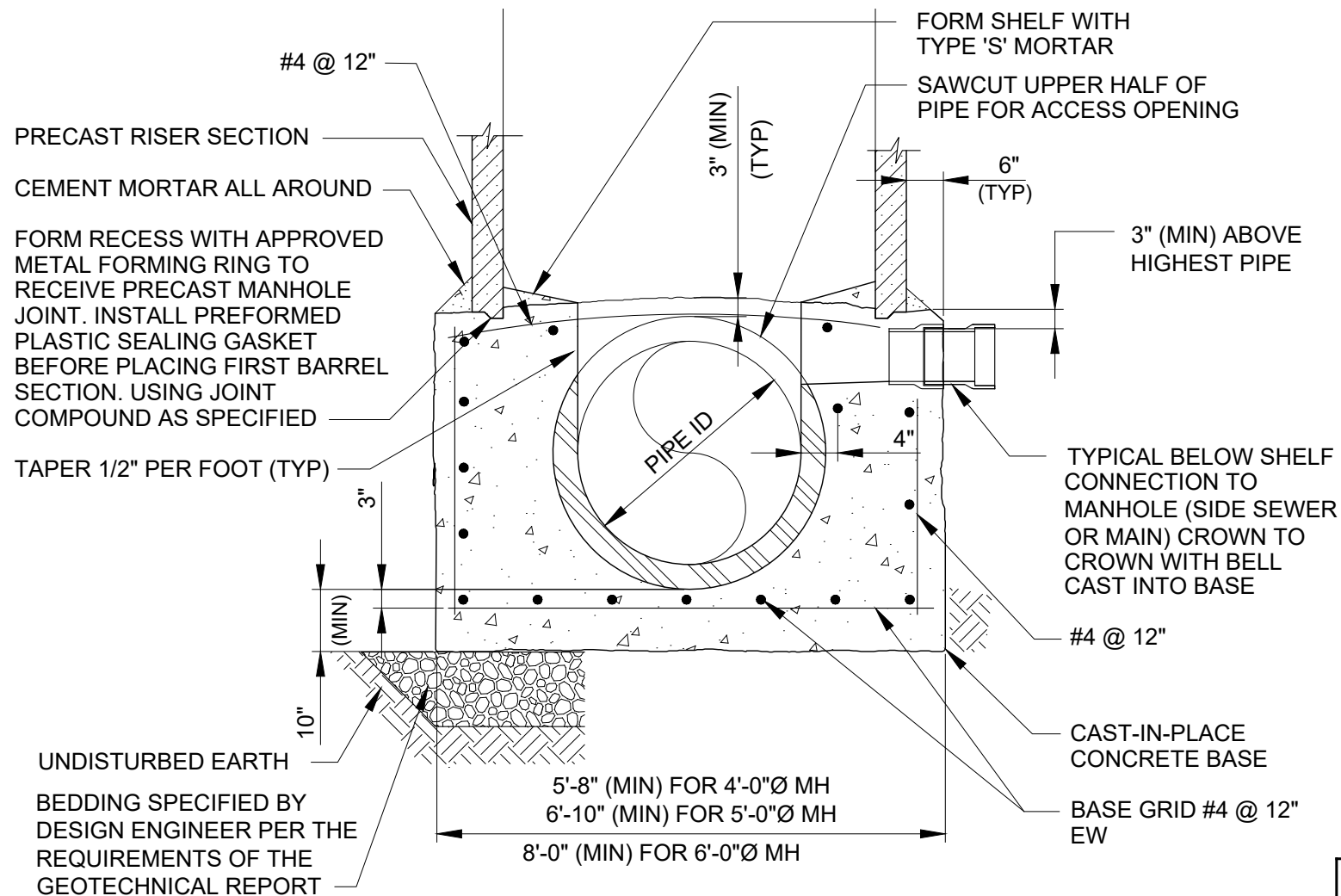
**FOUNDATION PLAN
CAST IN PLACE MANHOLE**

NOT TO SCALE



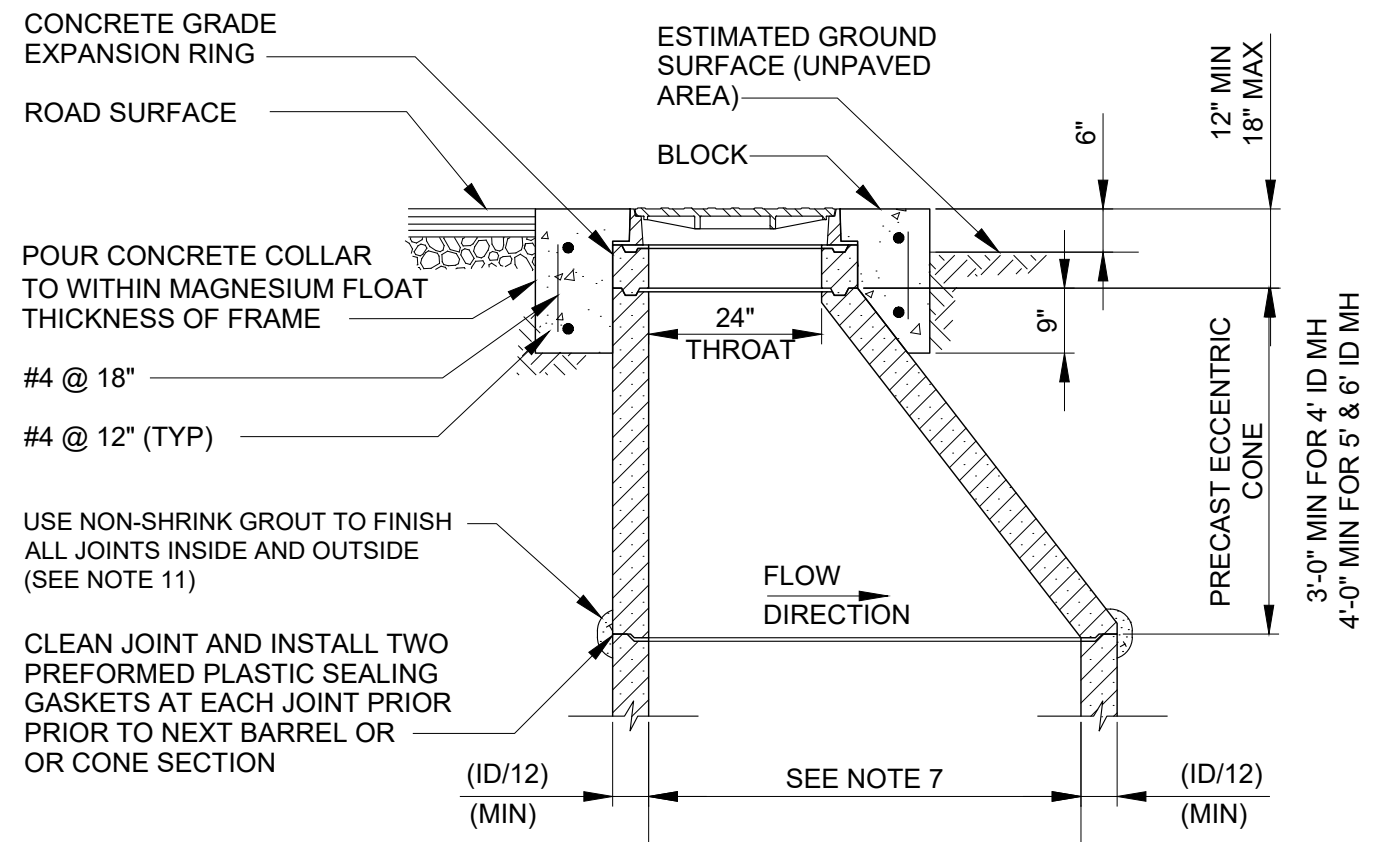
PLAN - MANHOLE FRAME

NOT TO SCALE



BASE SECTION

NOT TO SCALE



UPPER SECTION (ROTATED 90°)

NOT TO SCALE

FAIRFIELD-SUISUN SEWER DISTRICT
 1010 CHADBOURNE RD.
 FAIRFIELD, CA 94534-9700
 (707) 429-8930 PH
 (707) 429-1280 FX

PUMP STATION AND COLLECTION SYSTEM DESIGN STANDARDS

CAST-IN-PLACE MANHOLE DETAILS

DETAIL NO. **1.2**
 DATE 10/4/2021